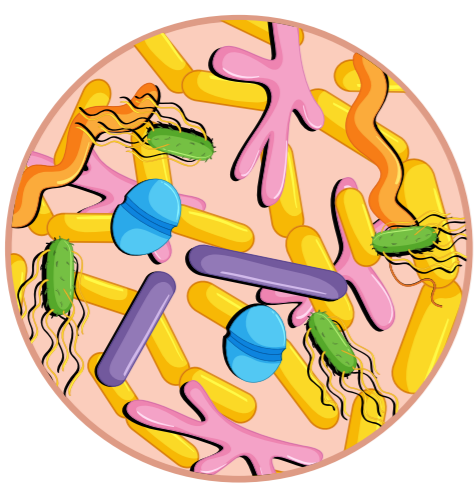


LES DÉCOMPOSEURS DU COMPOST

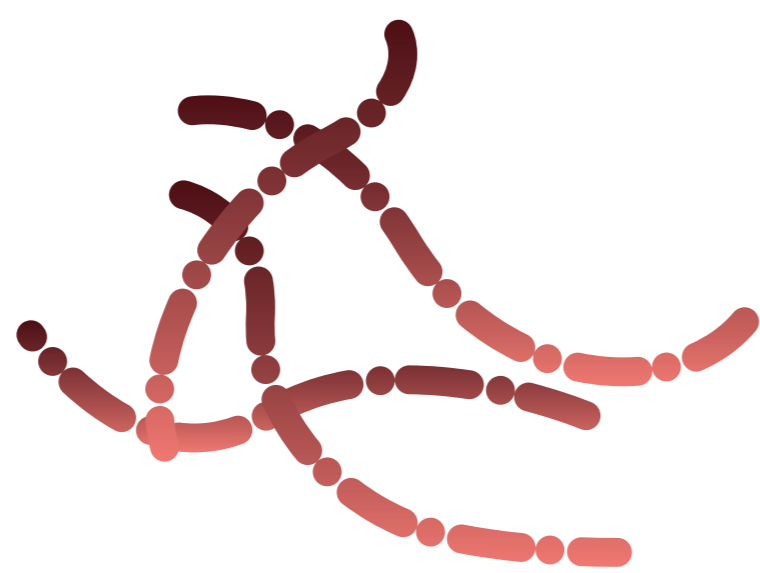
La transformation en humus est l'oeuvre de divers décomposeurs. Les plus nombreux et les premiers à entrer en action sont **les micro-organismes**.

MICRO-ORGANISMES

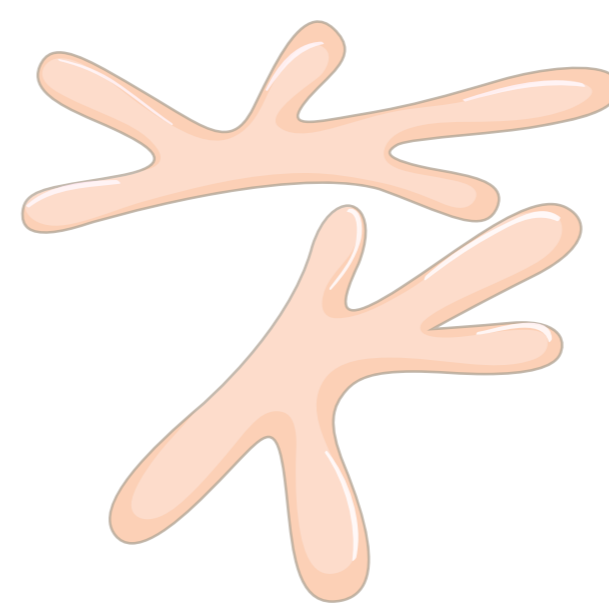
Bactéries
1µm



Actinomycètes
2 à 5µm



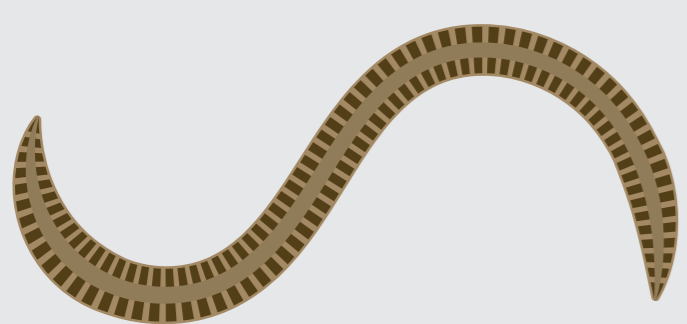
Mycellium
Filaments de champignons
Diamètre 10µm



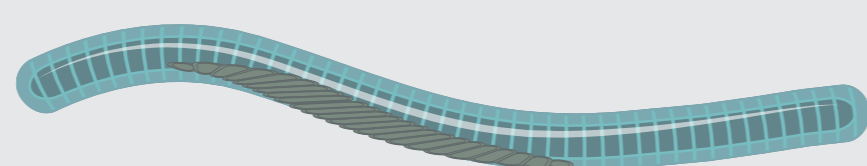
Acarien
0.1 à 0.2mm



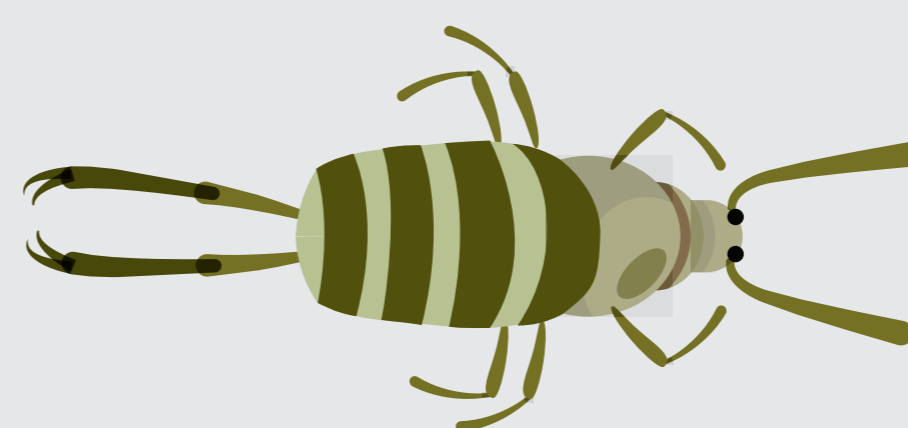
Nematode
1mm



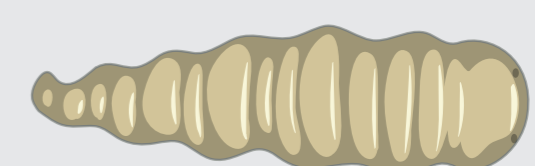
Enchytréide
1 à 5mm



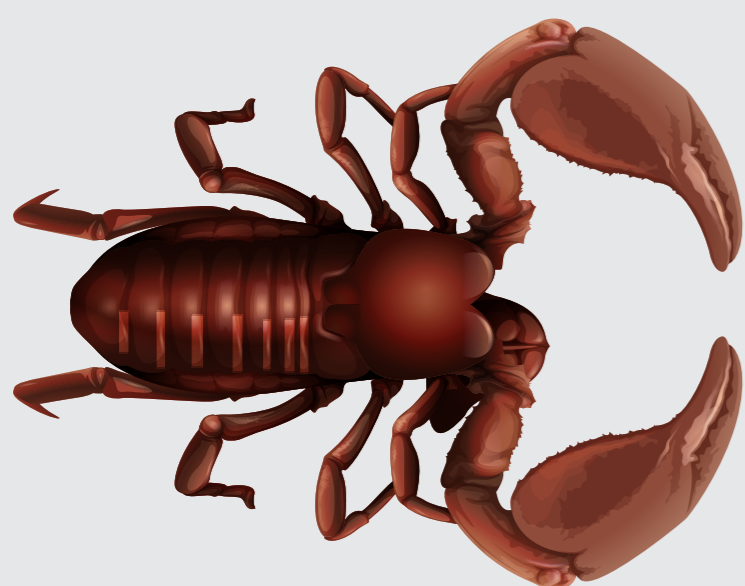
Collembole
5mm



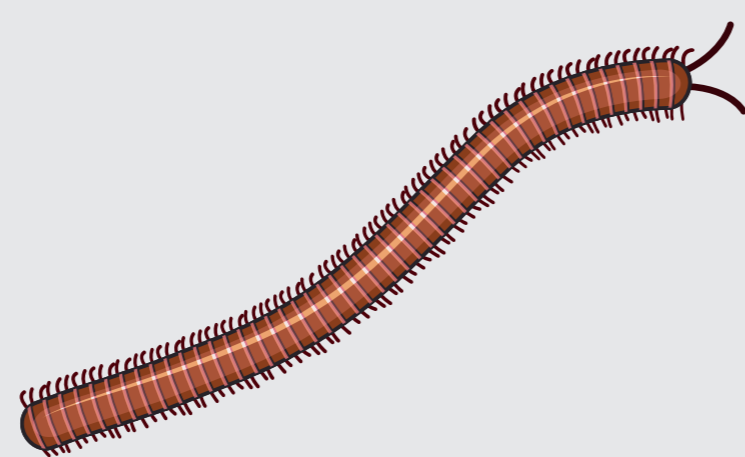
Larve de mouches et
moucheons
5mm



Pseuscorpion
6mm



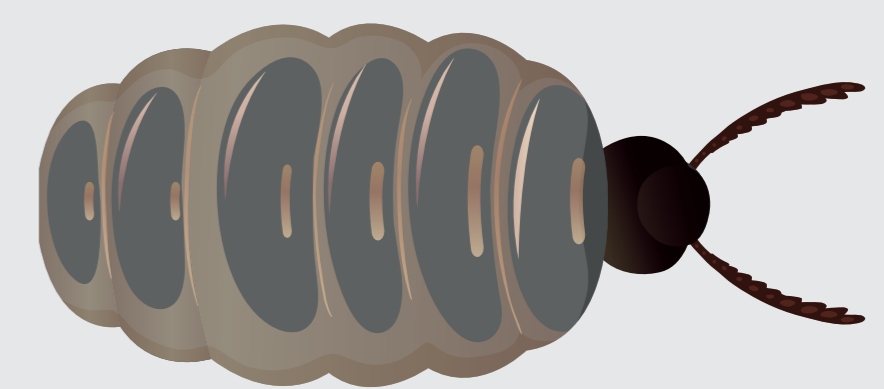
Iule
1 à 3cm



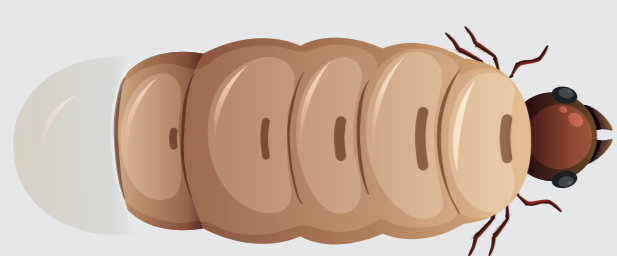
Cloporte
1.5 à 2cm



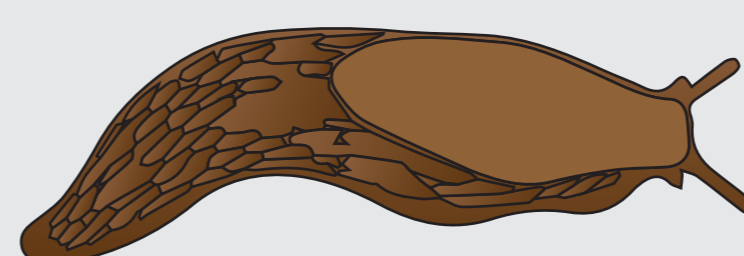
Glomeris
1 à 2cm



Cétoine
1.5 à 2cm



Limace
5 à 7cm



Ver rouge épigé (ou ver
rouge du fumier)
5 à 8cm

